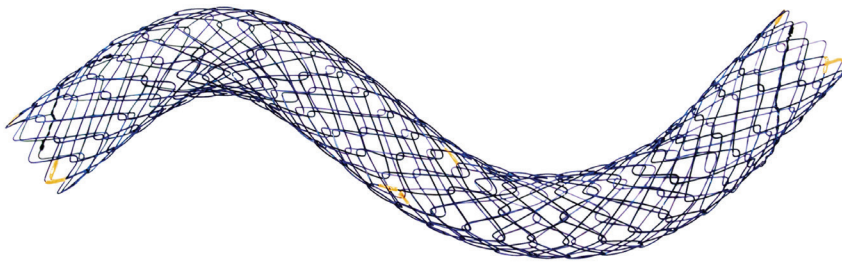


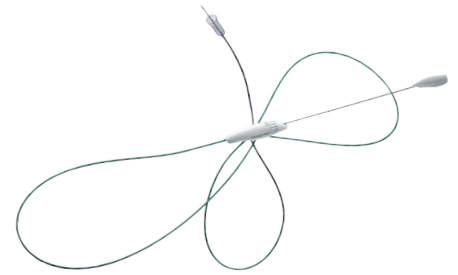
# FAUNA STENT™

## Canine Tracheal Stent

### Tracheal Stent



### Kinking-Resistance Designed Delivery Device

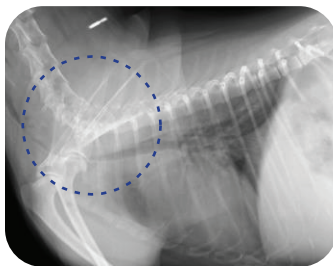


with Recapture Feature

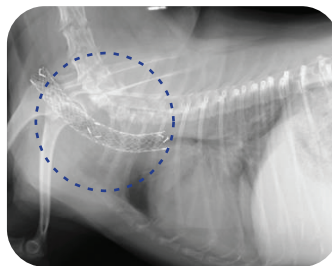
## Revolutionary Tracheal Collapse Treatment for Canine

Now it is possible to remedy tracheal collapse with JPI's FAUNA STENT™.

1. Minimal granulation tissue.
2. No reported case of technical issues after the procedure.
3. High visibility with 9 radiopaque markers.
4. Excellent flexibility by handmade hook & cross.
5. Optimized radial force.
6. Minimized foreshortening enables accurate positioning.
7. No reported case of stent fracture and/or collapse.
8. Wide range of sizes for different needs.
9. Simple & easy procedure with recapture function.



Before



After

#### Source

〈Tokyo University of Agriculture and Technology〉

- Symptoms: Coughing and Difficult in Breathing
- Patient: Yorkshire Terrier, 10 yr old, male, 3.3kg
- Stent: Diameter 8mm & Length 7cm

### Effective when

#### Tracheal collapse

- Medication therapy is ineffective.
- Difficult to perform surgical outside-ring technique procedure.
- Dyspnea.

#### Early progressive tracheal collapse

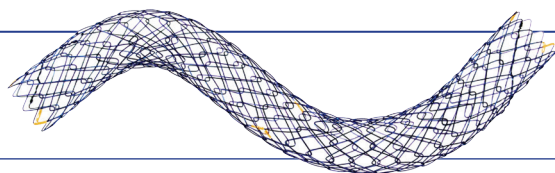
- Inhibition effect by early procedure.

# FAUNA STENT™

## Characteristics

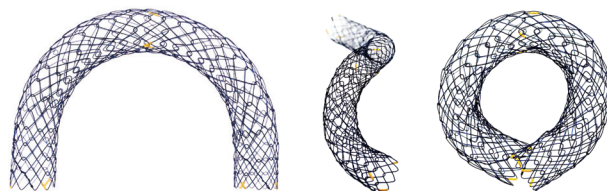
- **Material**

\* Nitinol: Shape memory nickel titanium alloy wire.



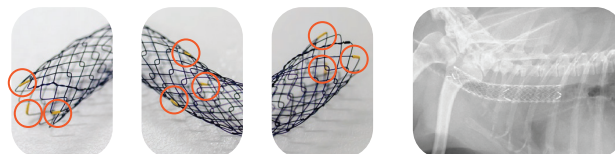
- **Excellent flexibility**

- **No reported case of stent fracture and collapse thanks to low-axial force.**



- **Radiopaque Marker**

Three locations: at beginning, middle and end of the stent.



- **Minimal irritation**

No reported case of granulation thus far.

(Clinical study result: 2+ years of monitoring on normal patient for granulation)

## Specification (Customized stent solution available upon request)

| P/N        | Stent         |             |
|------------|---------------|-------------|
|            | Diameter (mm) | Length (mm) |
| 06-040-050 | 6             | 40          |
| 06-050-050 | 6             | 50          |
| 06-060-050 | 6             | 60          |
| 06-070-050 | 6             | 70          |
| 06-080-050 | 6             | 80          |
| 06-090-050 | 6             | 90          |
| 06-100-050 | 6             | 100         |

| P/N        | Stent         |             |
|------------|---------------|-------------|
|            | Diameter (mm) | Length (mm) |
| 08-040-050 | 8             | 40          |
| 08-050-050 | 8             | 50          |
| 08-060-050 | 8             | 60          |
| 08-070-050 | 8             | 70          |
| 08-080-050 | 8             | 80          |
| 08-090-050 | 8             | 90          |
| 08-100-050 | 8             | 100         |

| P/N        | Stent         |             |
|------------|---------------|-------------|
|            | Diameter (mm) | Length (mm) |
| 10-040-050 | 10            | 40          |
| 10-050-050 | 10            | 50          |
| 10-060-050 | 10            | 60          |
| 10-070-050 | 10            | 70          |
| 10-080-050 | 10            | 80          |
| 10-090-050 | 10            | 90          |
| 10-100-050 | 10            | 100         |

### Delivery Device

- Diameter : 10.2 Fr
- Usable Length : 500 mm

\*JPI's FAUNA STENT™ is the first tracheal stent developed and approved as a canine specific solution in Korea.  
(Korea Animal & Plant Quarantine Agency #113-1 and #113-2)

## Precaution

- Pre and post medication for 14 days.
- Not applicable in case of Laryngoparalysis.
- Weight loss recommended for optimal result.
- Not applicable in case of Trachealis Muscle Redundancy.

## JPI Healthcare Co., Ltd.

📍 608-ho, 28, Digital-ro 33-gil, Guro-gu, 08377, Seoul, Korea

☎ +82.2-2108-2580 📠 +82.2-2108-1180

🌐 [www.jpi-korea.com](http://www.jpi-korea.com)

In Partnership with

**M.I.Tech**  
Expanding Quality of Life